

NOTES

AMOUNT OF INSTREAM FLOW REQUESTED
AT DOWNSTREAM END OF STREAM SEGMENT NO. 1.

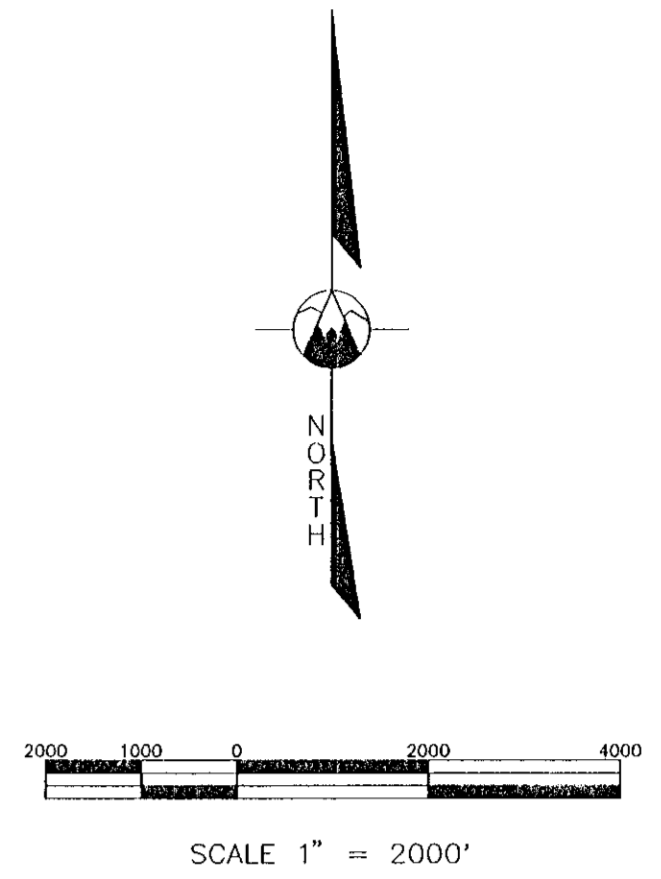
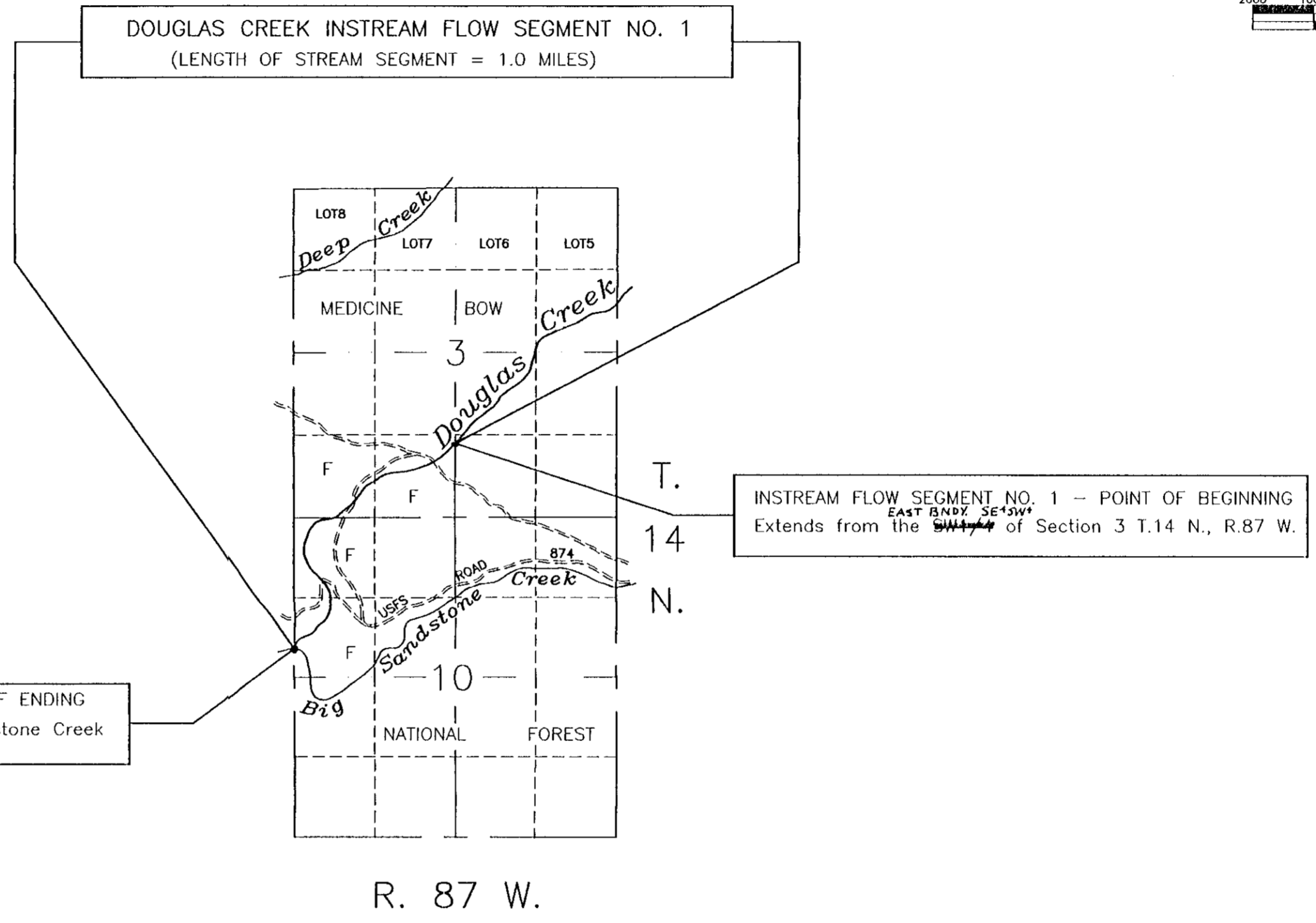
MONTH	FLOW (cfs)	APPROVED FLOW (cfs)
October	0.3	0.3
November	0.3	0.3
December	0.3	0.3
January	0.3	0.3
February	0.3	0.3
March	0.3	0.3
April	0.3	0.3
May	3.6	3.6
June	3.6	3.6
July	0.5	0.5
August	0.5	0.5
September	0.5	0.4

Based on the results of a study conducted in 1994 and data analysis in 1995 by the Wyoming Game and Fish Department.

This is an un-gaged stream. If the State Engineer's Office determines that the measurement of instantaneous flow is needed to administer this water right, a gage will be installed at or near the downstream end of the instream flow segment.

TABLE OF INTERVENING PERMITS

Adjudicated
NONE
Unadjudicated
NONE



CERTIFICATE OF SURVEYOR

STATE OF WYOMING)
COUNTY OF LARAMIE) ss

I, Becky J. Braman, a Professional Land Surveyor in the State of Wyoming do hereby certify that this map has been prepared from the U.S. Geological Survey Topographic Quadrangles, the Bureau of Land Management Surface Management Quadrangles and GLO Plats, and Wyoming State Engineer's water right records and that it correctly represents the location of the stream and the lands that it flows through to the best of my belief and knowledge.

Becky J. Braman
Becky J. Braman, Professional Land Surveyor, No. P.L.S. 388
Dated: *December 1, 1995*
WYOMING

OWNERSHIP LEGEND

F - Federal Land / United States Forest Service

MAP
TO ACCOMPANY
APPLICATION FOR
DOUGLAS CREEK
INSTREAM FLOW SEGMENT NO. 1

APPLICANT:

WYOMING WATER DEVELOPMENT COMMISSION
HERSCHLER BUILDING 6920 YELLOWTAIL ROAD
CHEYENNE, WYOMING 82002

SCANNED APR 19 2006

APPROVED *April 8, 2006*
Patrick T. Tyrrell
PATRICK T. TYRRELL, STATE ENGINEER

TF 29 2/15

56 I.F. File: E-28