

**NOTES**

AMOUNT OF INSTREAM FLOW REQUESTED AND APPROVED AT DOWNSTREAM END OF STREAM SEGMENT NO. 1.

DATES	APPROVED FLOW (cfs)
October 1 to April 14	0.7
April 15 to June 30	4.8
July 1 to September 30	0.9

Based on the results of a study completed in 1999 by the Wyoming Game and Fish Department.

This is an ungaged stream. If required by the State Engineer's Office, a gage will be installed at or near the downstream end of the instream flow segment.

**OWNERSHIP LEGEND**

F - Federal Land / Bureau of Land Management  
 S - State Land / State of Wyoming  
 P - Patent Land / Private

**TABLE OF INTERVENING PERMITS**

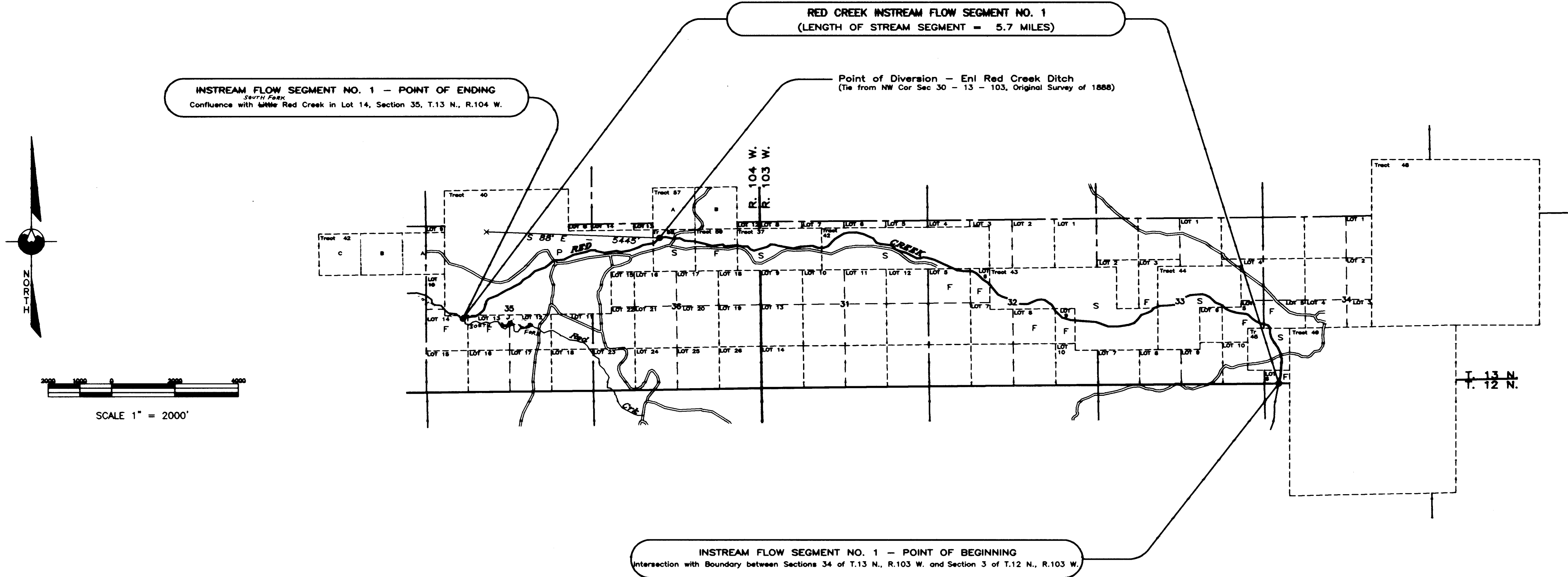
Adjudicated

Enlargement Red Creek Ditch

Permit No.	Proof No.	Priority	Acres	CFS	Cert. No.
770Enl.	11193	1/18/02	169.0	2.41	BK. 32, PG. 361

Unadjudicated

PERMIT No.	PRIORITY	ACRE-FEET	STATUS
278 RES.	1-18-1902	80.0	EXPIRED
279 RES.	1-18-1902	42.0	EXPIRED



**CERTIFICATE OF SURVEYOR**

STATE OF WYOMING ss  
 COUNTY OF LARAMIE

I, Becky J. Braman, a Professional Land Surveyor in the State of Wyoming do hereby certify that this map has been prepared from the U.S. Geological Survey Topographic Quadrangles, the Bureau of Land Management Surface Management Quadrangles and GLO Plats, and Wyoming State Engineer's water right records and that it correctly represents the location of the stream and the lands that it flows through to the best of my belief and knowledge.

*Becky J. Braman*  
 Becky J. Braman, Wyo. P.L.S. 3881  
 Dated: *December 29, 1999*  
 WYOMING

**MAP TO ACCOMPANY APPLICATION FOR RED CREEK INSTREAM FLOW SEGMENT NO. 1**

STATES WEST WATER RESOURCES CORPORATION  
 INTERMOUNTAIN PROFESSIONAL SERVICES, INC.  
 CHEYENNE, WYOMING  
 JOB NO. 3013 DATE 11/08/99

APPROVED *January 9, 2005*  
*Patrick T. Tyrrell*  
 PATRICK T. TYRRELL, STATE ENGINEER

APPLICANT:  
 WYOMING WATER DEVELOPMENT COMMISSION  
 HERSCHLER BUILDING  
 CHEYENNE, WYOMING 82002

TF30/39

40 IF File: E-27  
 MICRO FILMED MAR 05 2005