

**WYOMING WATER DEVELOPMENT OFFICE**

6920 Yellowtail Road  
 Cheyenne, WY 82009  
 Phone: 307-777-7626  
 Fax: 307-777-6819

PRE-SORTED  
 STANDARD  
 US POSTAGE PAID  
 CHEYENNE WY  
 PERMIT #7

WYOMING WATER DEVELOPMENT OFFICE

Fall 2011



# Water News

## Gillette Regional Water Supply Project

Gillette has begun a major project to provide an adequate, high quality water supply for the area's growing population and the future. The project will be designed to help the city and water districts in the surrounding area. This article summarizes both the planning and construction level projects that the city and state have undertaken.

dressing present and future needs. This included evaluating the potential for Gillette to serve as the water purveyor for a regional system.

pleted in 2010. It outlined the routes the community extensions would need to take to serve the interested districts.



Highway 50 Waterline Project

These planning projects lead to several large phased construction projects, including the Gillette Madison Pipeline Project (described below) and the Community Extension Pipeline Projects (not under construction at this time).

### Planning Projects Regional Study

In 2008 the City of Gillette requested a comprehensive regional planning study from the Water Development Commission for the city and surrounding areas. The growth in Gillette in the previous ten years put additional pressure on the water resources that Gillette and its neighbors depend on. In 2007 alone, the City Planning Office approved over 900 new residential building permits.

Concurrent with this study Gillette contracted directly for additional work to be performed on extensions from the main pipeline that will be needed to supply rural water districts around the city. These extensions will convey water to locations convenient for connection by interested districts, and will be part of the city's conveyance system.



Community Extensions

As the Gillette Regional Pipeline Project has progressed a number of rural subdivisions have expressed interest in becoming part of the regional project. In 2011 the following rural water districts applied to the Water Development Office for the planning studies needed to bring their

(Continued on page 2)

This regional planning study was conducted to identify the impacts growth is having on available water resources, and to evaluate existing water resources in the area to determine the best course of action for ad-

The comprehensive regional planning project was completed in the spring of 2009, it laid the groundwork for the Gillette Regional Pipeline Project. The concurrent study initiated by the City of Gillette was com-



### Inside this issue:

<b>River Basin Planning and Basin Groundwater Studies</b>	<b>3</b>
<b>News from the Water Resources Data System</b>	<b>3</b>
<b>Calendar of Water Events</b>	<b>4</b>

(Continued from page 3)

Wyoming environmental impact statements.

The Library has added several Wyoming Water Development Commission project reports to its collection this year. Included in the additions are "Wheatland Irrigation

District Master Plan Level I," "Sweetwater Water Supply Level I Reconnaissance Study," "Pioneer Rehabilitation Level II Study," "Sheridan Supplemental Supply Study Level II, Phase I," "Clear Creek Watershed Level I Study," "Kirby Creek Watershed Level I Study," and

"Managed Aquifer Recharge, Storage and Recovery Project." These reports are available in hard copy and will soon be available online at <http://library.wrds.uwyo.edu>.

The public can search the library's collection by clicking on the

'Search' button on the library homepage. The search can be expanded to include all the libraries in the WYLD network (Wyoming Libraries Database). If you have any questions about library use, please send an email to [library@wrds.uwyo.edu](mailto:library@wrds.uwyo.edu).

## Calendar of Water Events



January 11, 2012 - WWDC Meeting, Cheyenne, WY

February 22-23, 2012 - Glen Canyon Adaptive Management Work Group Meeting - Phoenix, AZ

December 14, 2011 - Upper Colorado River Commission Meeting, Las Vegas, NV

January 11-13, 2012 - 4 States Irrigation Meeting, Ft. Collins, CO

March 9, 2012 - WWDC Meeting, Cheyenne, WY

December 14-16, 2011- Colorado River Water Users Association Annual Meeting, Las Vegas, NV

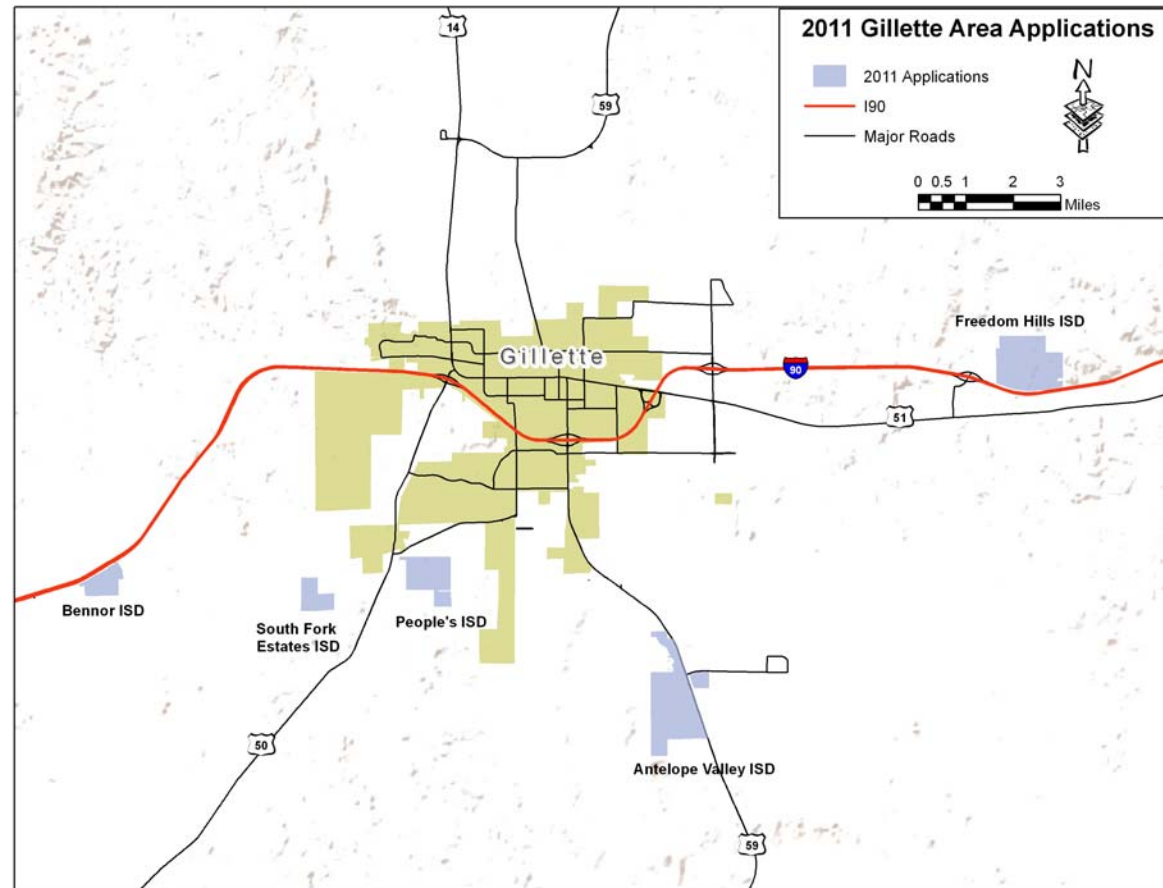
January 12, 2012 - Select Water Committee Meeting, Cheyenne, WY

*Gillette Regional Water Supply Project*

(Continued from page 1)

connections to the regional system to fruition:

- Antelope Valley Improvement and Service District
- Bennor Estates Improvement and Service District
- Freedom Hills Improvement and Service District
- Peoples Improvement and Service District
- South Fork Estates Improvement and Service District



These projects will be considered at the Commission's November meeting for inclusion in the 2012 Omnibus Planning Bill.

**Construction Projects**

Funding for the construction projects will come from state grants and loans. Legislation was approved in 2011 establishing a schedule for grant and loan appropriations to be concluded during the 2014 Legislative Session. The estimated total project budget is \$217,600,000. Of this amount, 67% is funded by state grants and 33% through Permanent Mineral Trust Fund (PMTF) loans, which are being administered by the WWDC. During a May 3, 2011 Special Election, Campbell County voters approved \$75 million through a capital facilities tax to pay-back the

PMTF loans. Collections for this 1% specific purpose excise tax began on October 1, 2011.

The project will be completed in phases as presented below. The overall project design is approximately 85% complete and is scheduled to be completed in March 2012. These phases form the basis for future construction contracts that will be completed during the next 5 years. Construction is anticipated to be completed in 2016.

- Engineering Design, Permitting, and Right Of Way acquisition.
- Well Field Facilities: including 2 Madison Formation Test Wells and 3

new Madison production wells. The test wells will be converted to production wells.

- Transmission Pipelines: there are seven pipeline segments to be constructed.
- Pine Ridge Facilities: including the Pine Ridge Storage Tank and the Pine Ridge Sodium Hypochlorite Disinfection Facility.
- Donkey Creek Pump Station.
- In-Town Treated Water Storage Reservoirs.

Construction work is also being conducted on the existing 30 inch transmission pipeline from the Madison Formation well field to the

city. There is a separate project from the regional system project and is funded by grants and loans from the WWDC. Phase 1 and 2 of this project are complete and include external joint bonding (Phase 1) and mortar lining repair of the steel pipeline (phase 2). Phase 3 involves installation of an impressed current cathodic protection system for the pipeline. This phase is not underway yet.

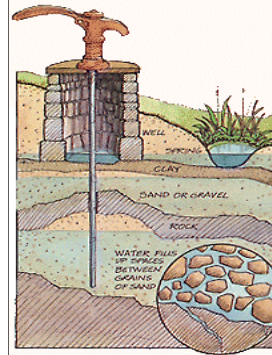
**River Basin Planning and Basin Groundwater Studies**

River basin plans have been completed for all seven of the major river basin in Wyoming, and the Wyoming Framework Water Plan was completed in 2007. Completion of the Framework Plan completed the first phase of Wyoming's river basin planning process. Groundwater was discussed in all of the initial basin plans and in the framework water plan but the focus of these first plans was on surface water.

Groundwater resources are important to Wyoming, with many municipalities and rural domestic water users depending on groundwater for their water. Because of this importance, it was determined there should be more detailed groundwater studies complete as part of the river

basin planning process. It was decided that the best way to fully address this

important resource was to work with research based agencies to pull together all information on groundwater resources and aquifers within the specific river basins of the state and to prepare well documented reports. Meetings were held with the U.S. Geological Survey (USGS) and the Wyoming State Geological Survey (WSGS). From the discussions, a plan was implemented to establish agreements and budgets for each of the river basins in a series of projects



to be led by the WSGS. The WSGS would work with the USGS and the University of Wyoming, Water Resources Data System (WRDS) to complete the project studies and produce the reports.

Through this association the basin groundwater studies are well underway.

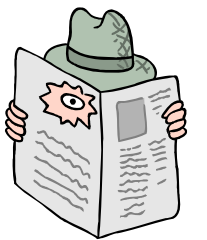
Tasks to be accomplished in the studies include: identifying basin aquifers and their extent; describing aquifer properties; defining water quantities availability and water quality, mapping recharge area and the rate of recharge; estimating safe yield and identifying future

water use opportunities.

The Green River Basin Groundwater Study has been completed and is available online at, <http://waterplan.state.wy.us/plan/green/green-plan.html>. The Wind/Bighorn Basin study is in final draft form and can be found at <http://waterplan.state.wy.us/plan/bighorn/bighorn-plan.html>.

Additionally, work is underway on the Platte River Basin groundwater study and the Bear River Basin groundwater study. The Platte River Basin study will be completed in 2012 and the Bear River Study should be completed in 2013. Funding for the Snake/Salt River Basin groundwater study has been approved and the agreement is being developed.

**News from the Water Resources Data System**



The Water Library, located in Wyoming Hall on the University of Wyoming campus and housed with the Water Resources Data System, is a comprehensive collection of over 20,000 documents on the State's water resources. Publications represented in the collection include items from the Wyoming Water Development Commission, State Engineer's Office, US Geological Survey, Bureau of Reclamation, Bureau of Land Management and University of Wyoming. Materials in the library cover the Wyoming water planning program, drought, global climate change, and

(Continued on page 4)